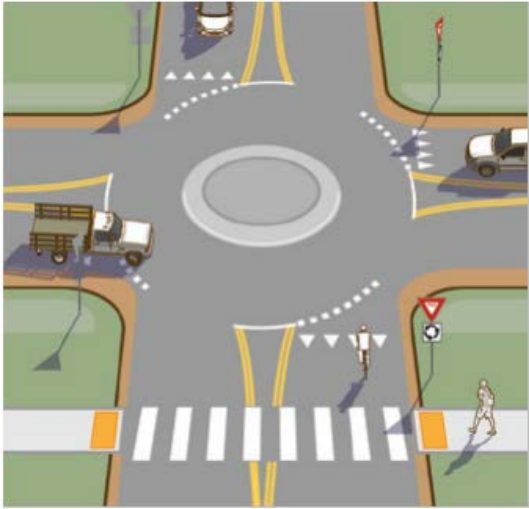




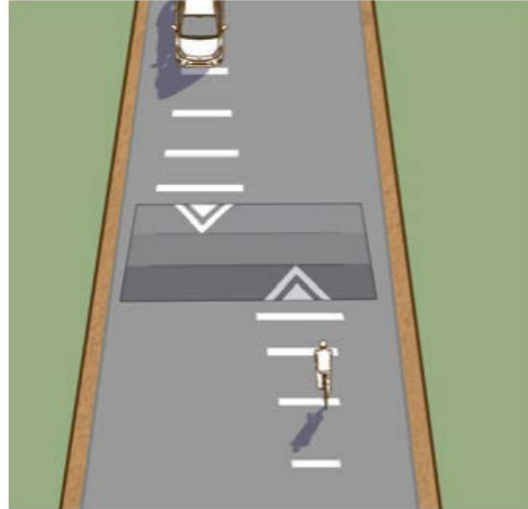
**TRAFFIC CALMING**

**WHAT IS IT?**

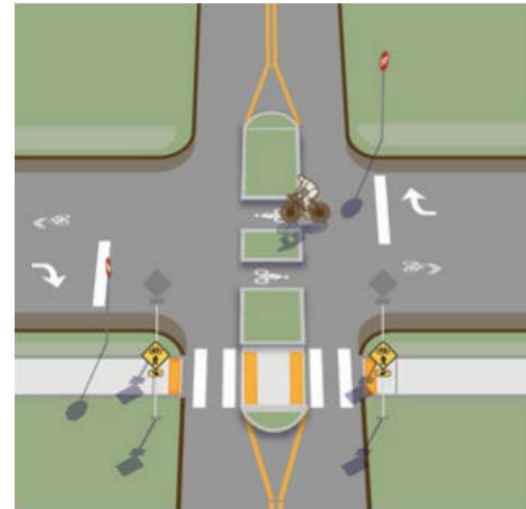
“Changes in street alignment, installation of barriers, and other physical measures to reduce traffic speeds and cut-through volumes, in the interest of street safety, liveability, and other public purposes”  
(Ewing, 1999; Ewing and Brown, 2009)



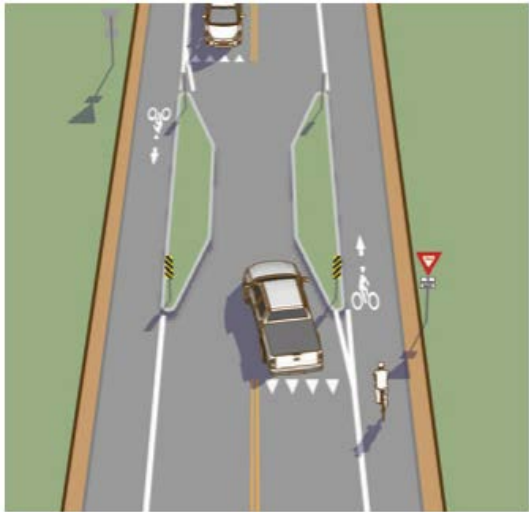
**Mini Roundabout**



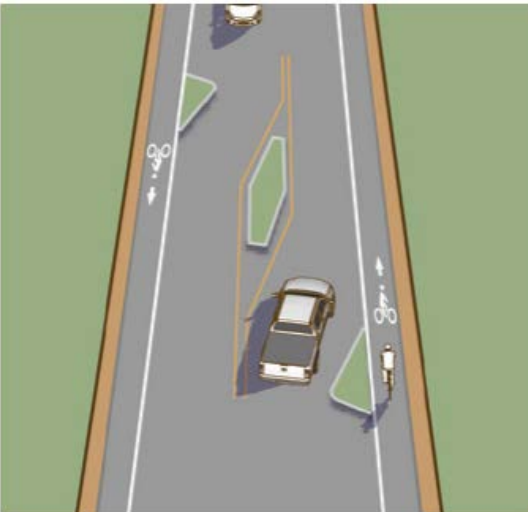
**Speed Humps and Speed Tables**



**Median Islands**



**Pinch Point**



**Lateral Shift**



**Median Island**



**WHAT IS IT NOT?**

**IT'S ABOUT  
VALUES**





**VALUES SOMETIMES CONFLICT**

**QUESTIONS?**