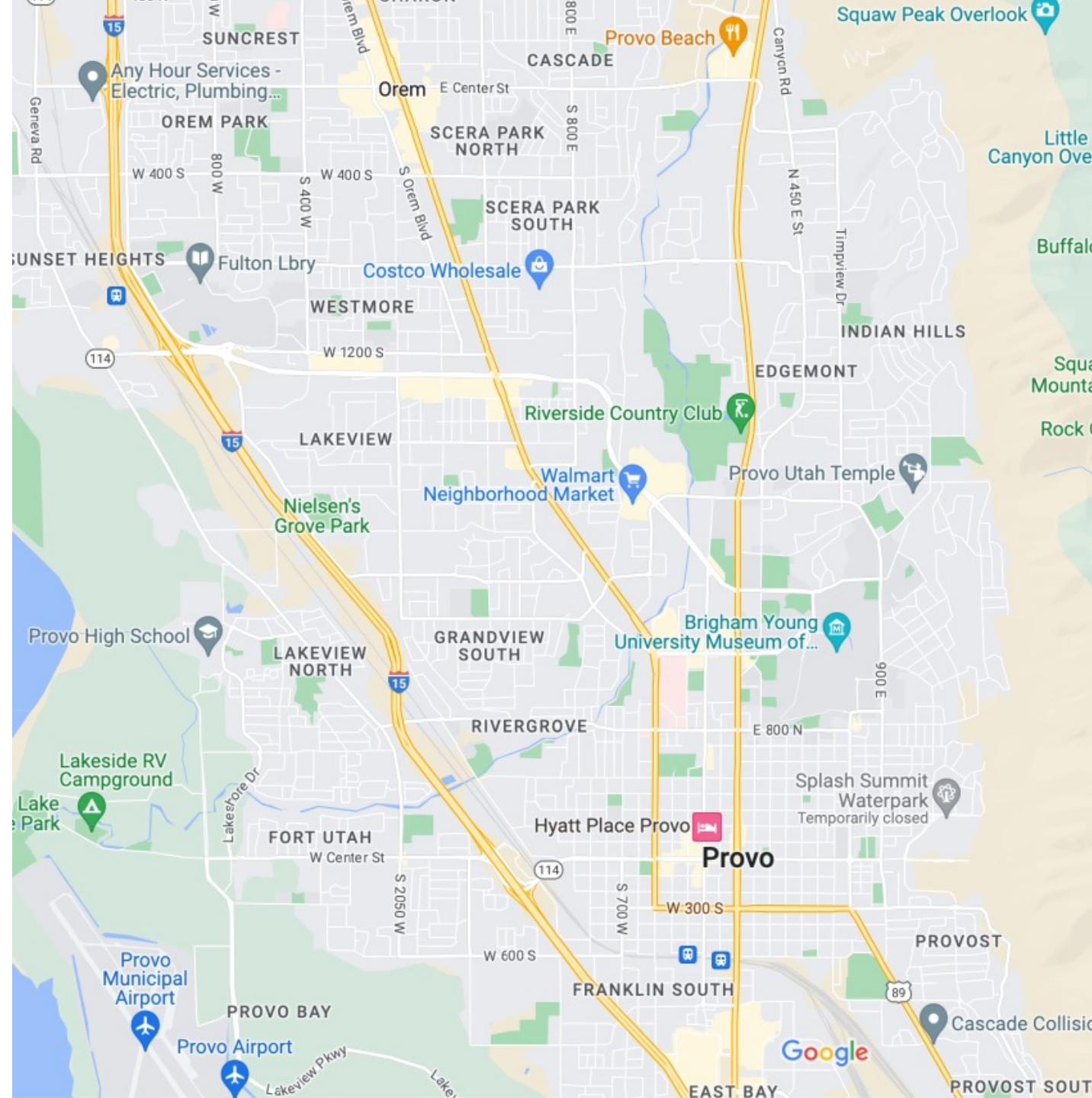
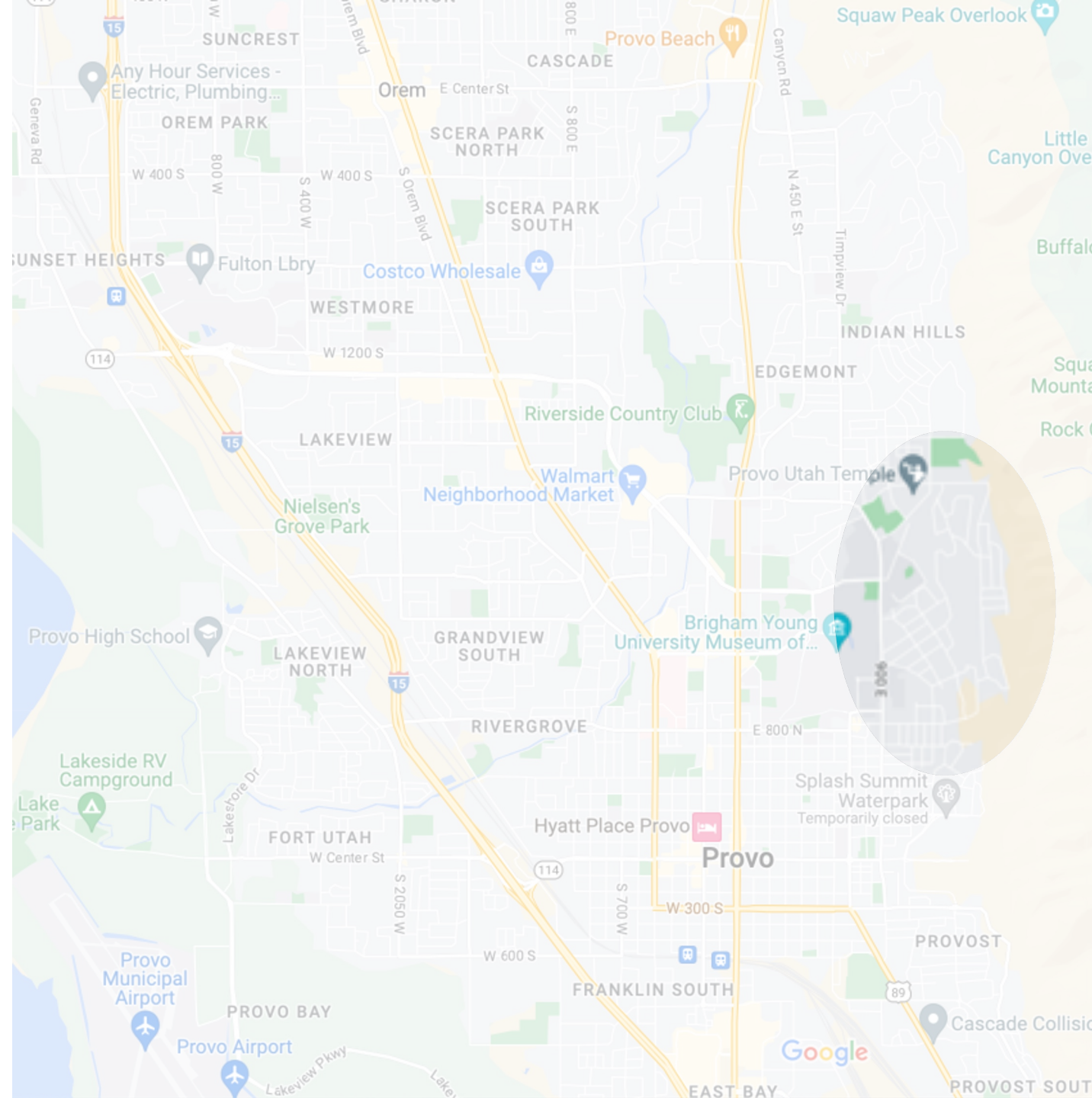


Oak Hills/Tree Streets

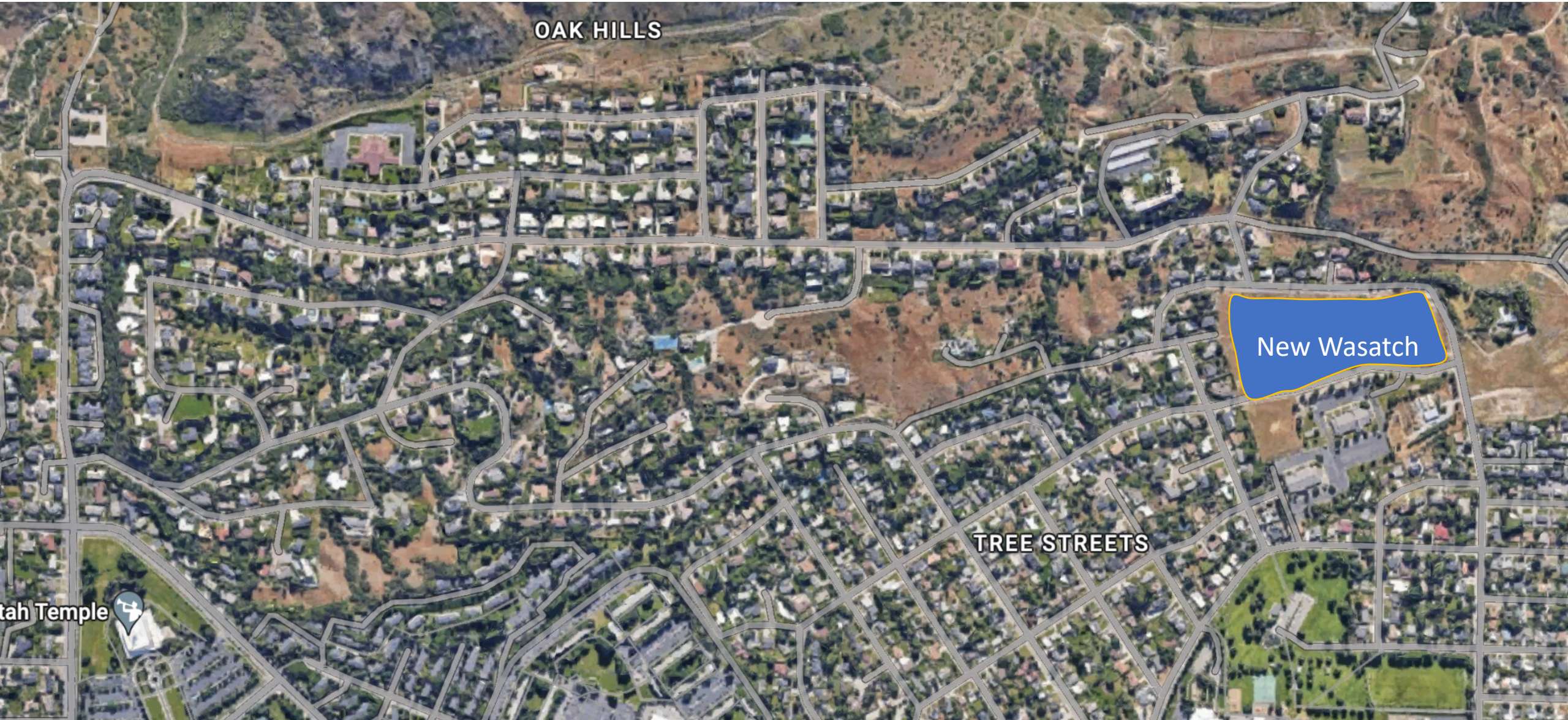


Oak Hills/Tree Streets



OAK HILLS AND TREE STREETS NEIGHBORHOOD

<1 MILE FROM THE NEW SCHOOL

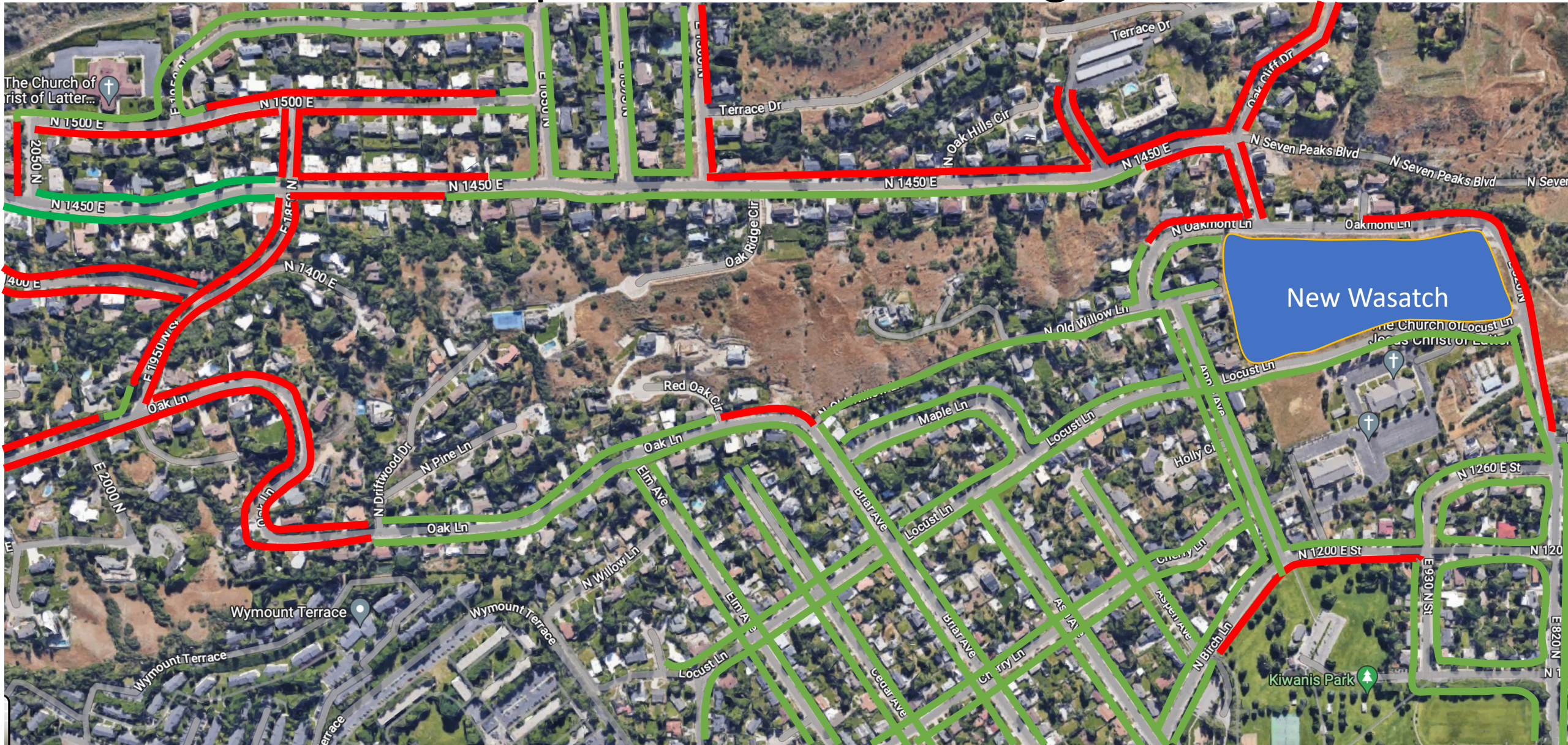


OAK HILLS AND TREE STREETS NEIGHBORHOOD <1 MILE FROM THE NEW SCHOOL



OAK HILLS AND TREE STREETS NEIGHBORHOOD

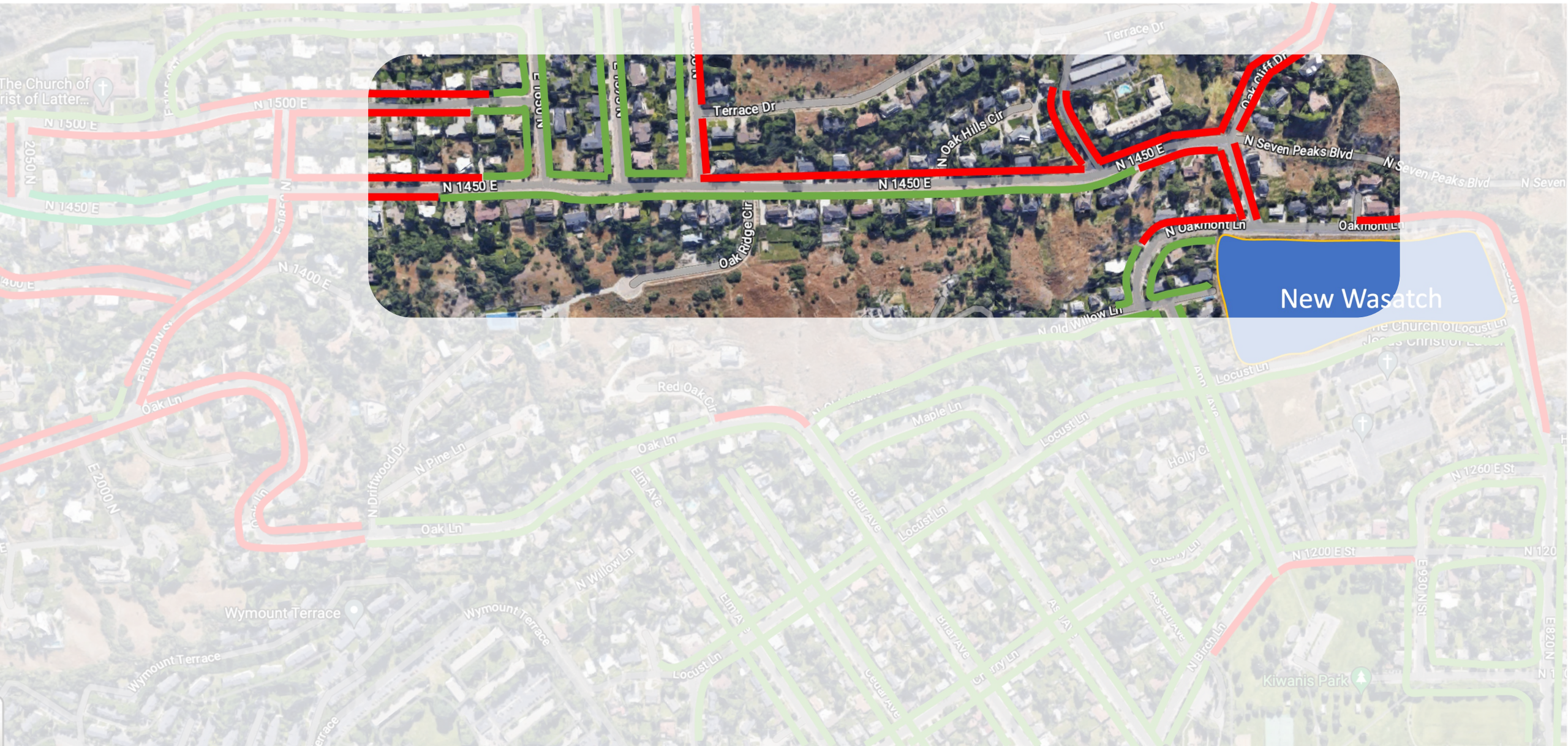
Incomplete sidewalks throughout



Oak Hills is trapped

- There is no way for kids to walk to school without being in the road

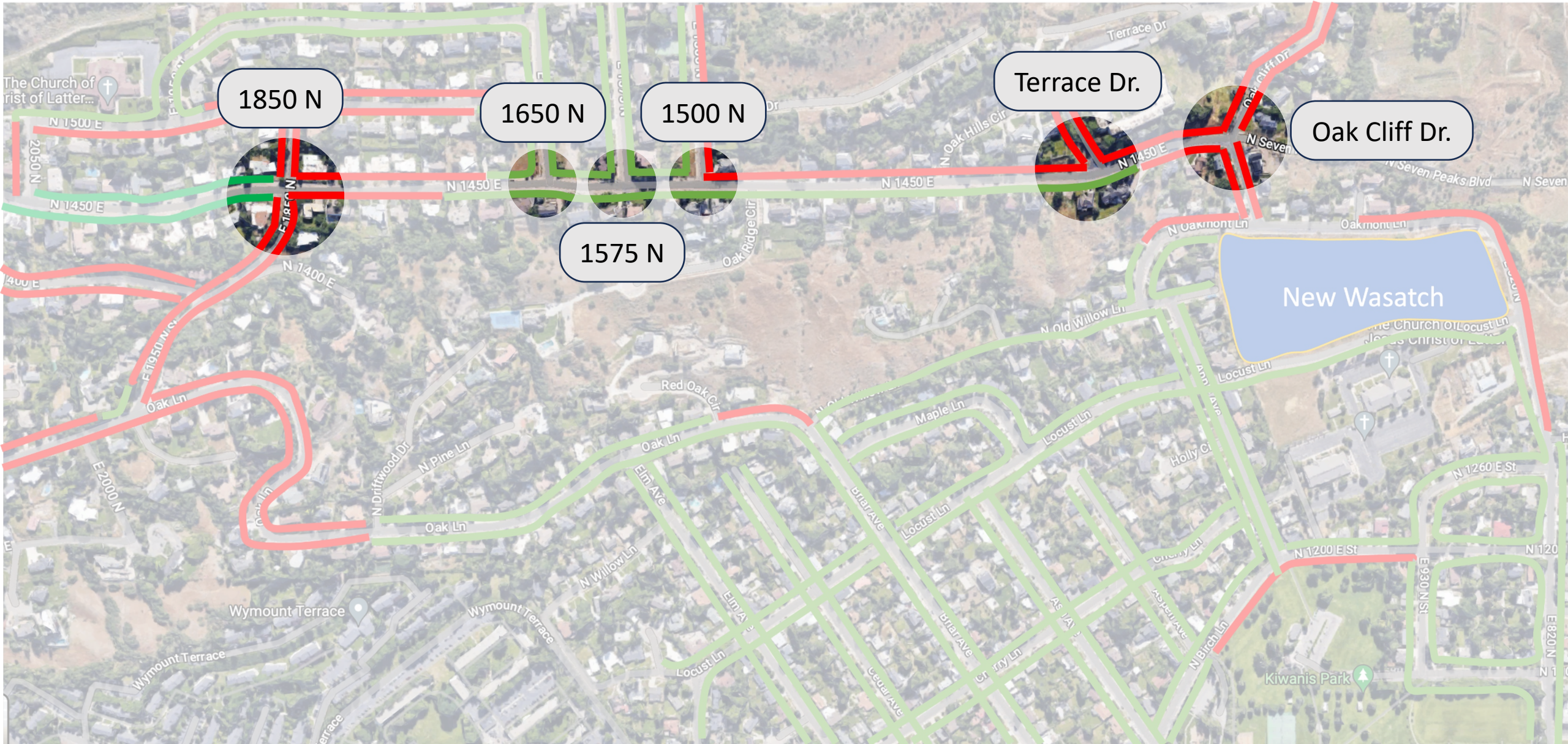
1450 E and Oak Cliff Lack Sidewalks



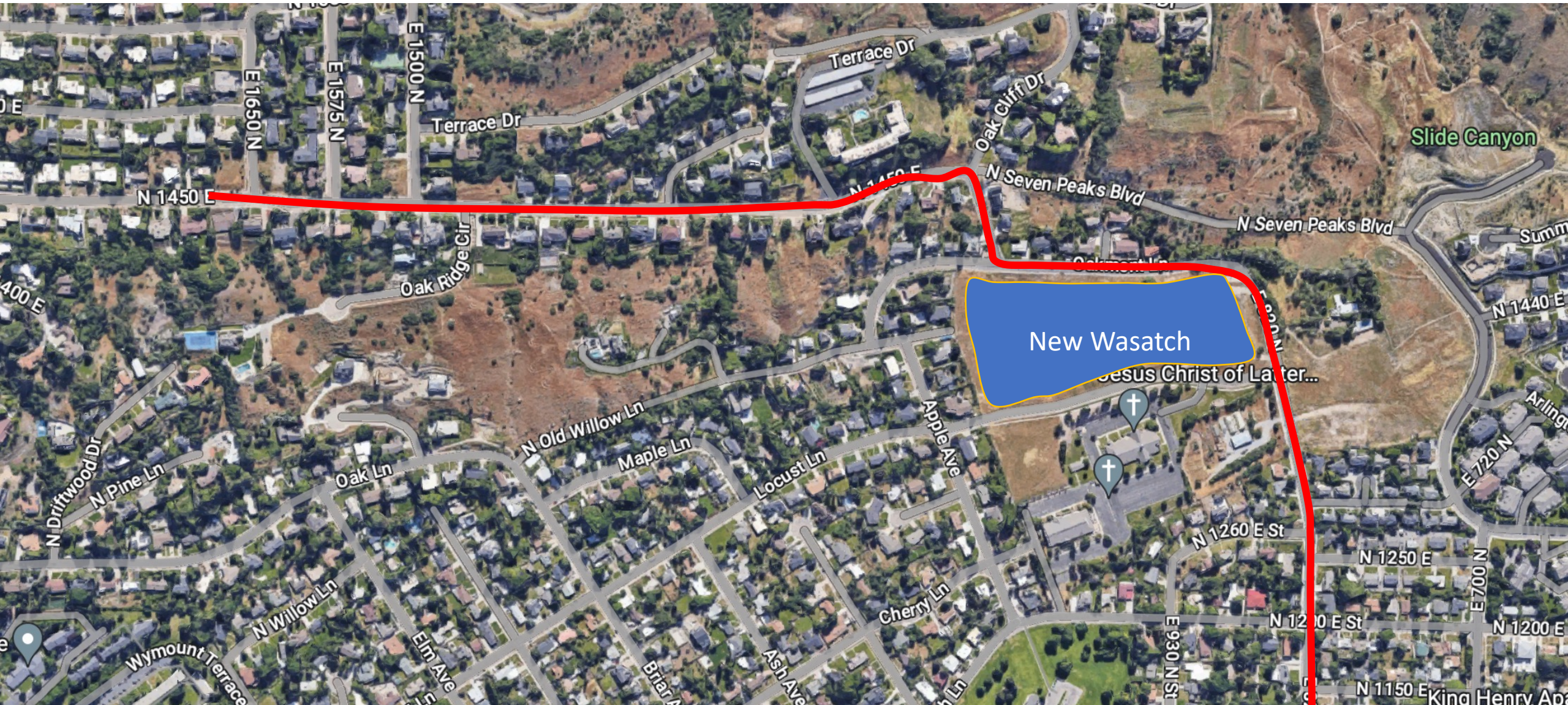
1450 E, 1850 N, Oak Ln (Wildmouse) Lack Sidewalks



Kids will be crossing 1450 in multiple places

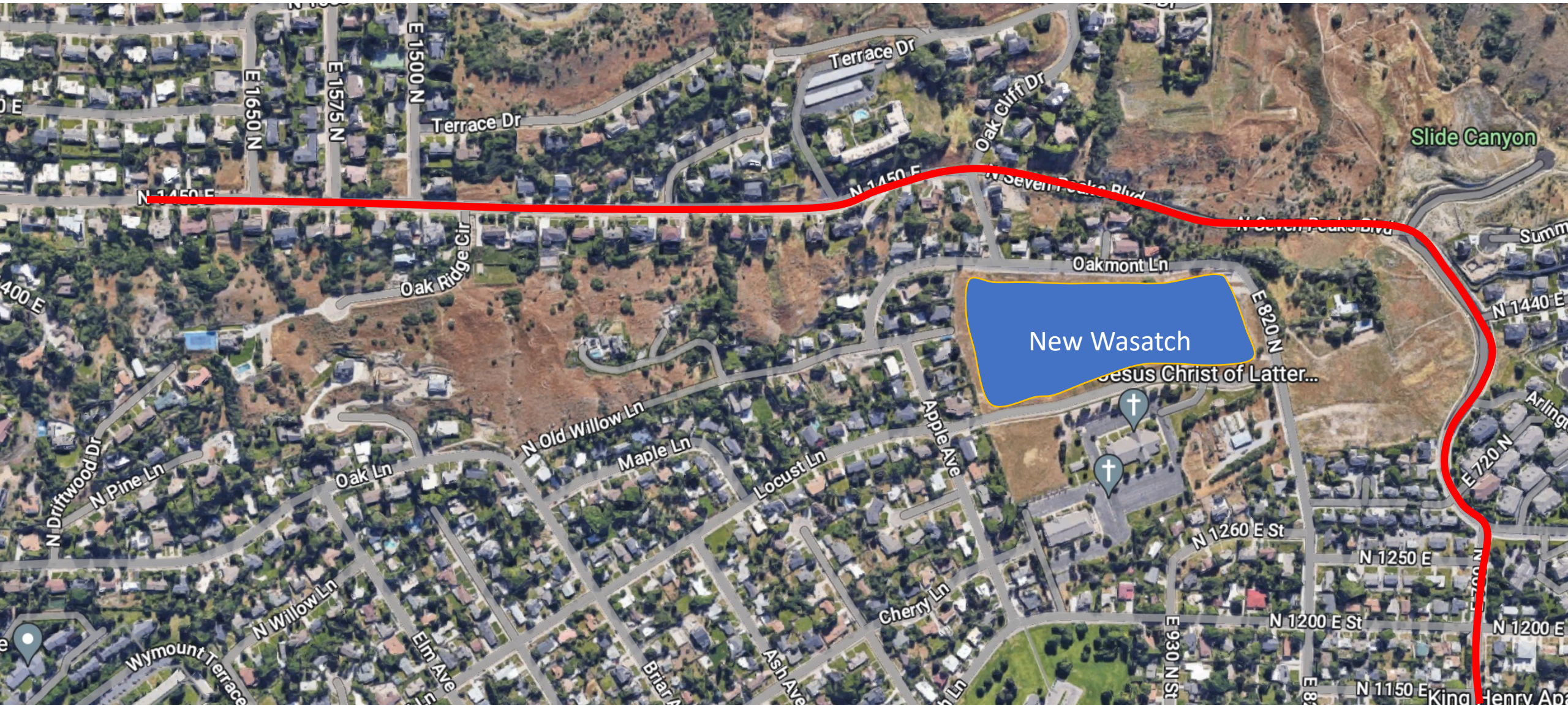


Extending 1450 would re-route traffic away from the school
current path from Oak Hills to BYU and south



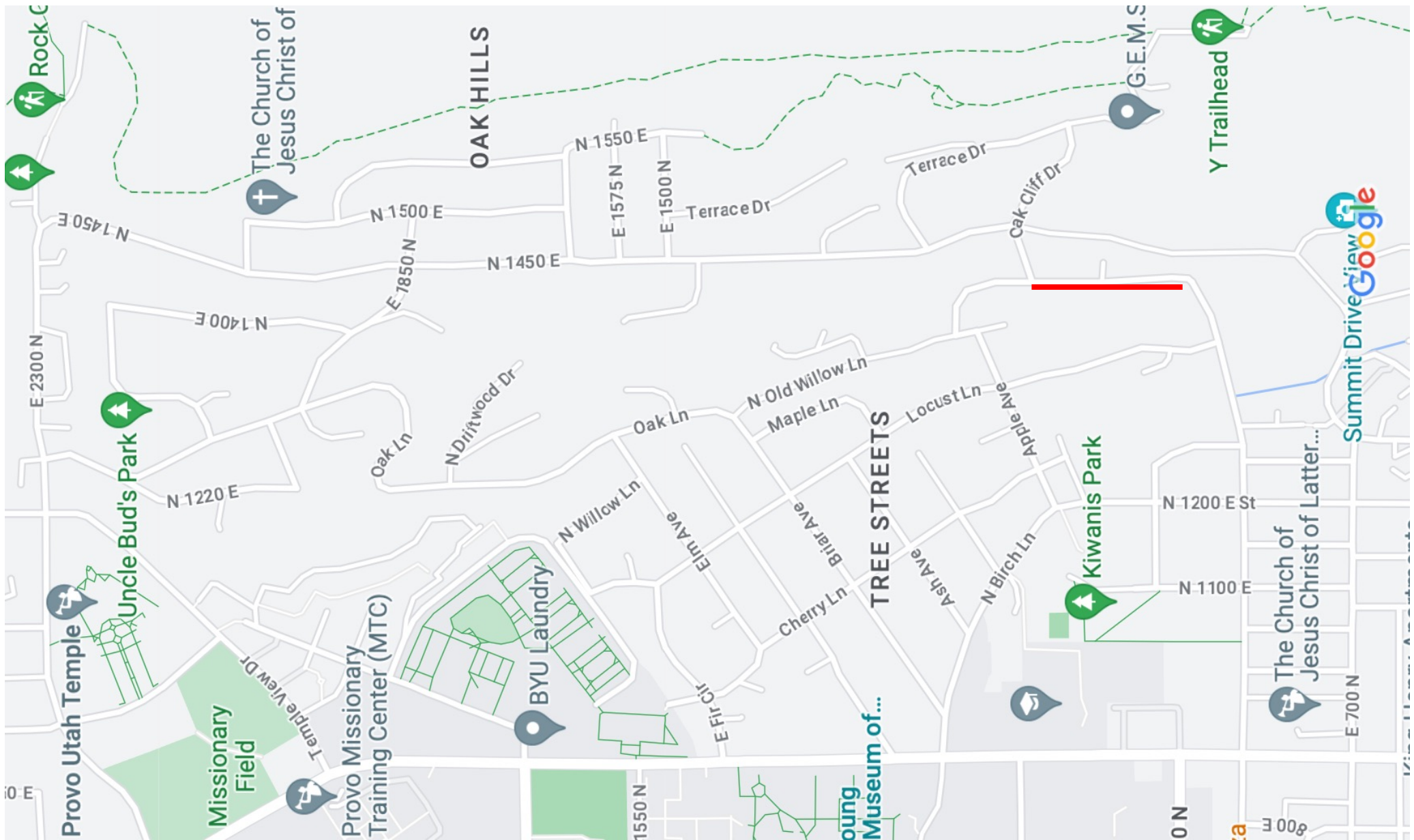
Extending 1450 would re-route traffic away from the school

Extension would avoid school altogether

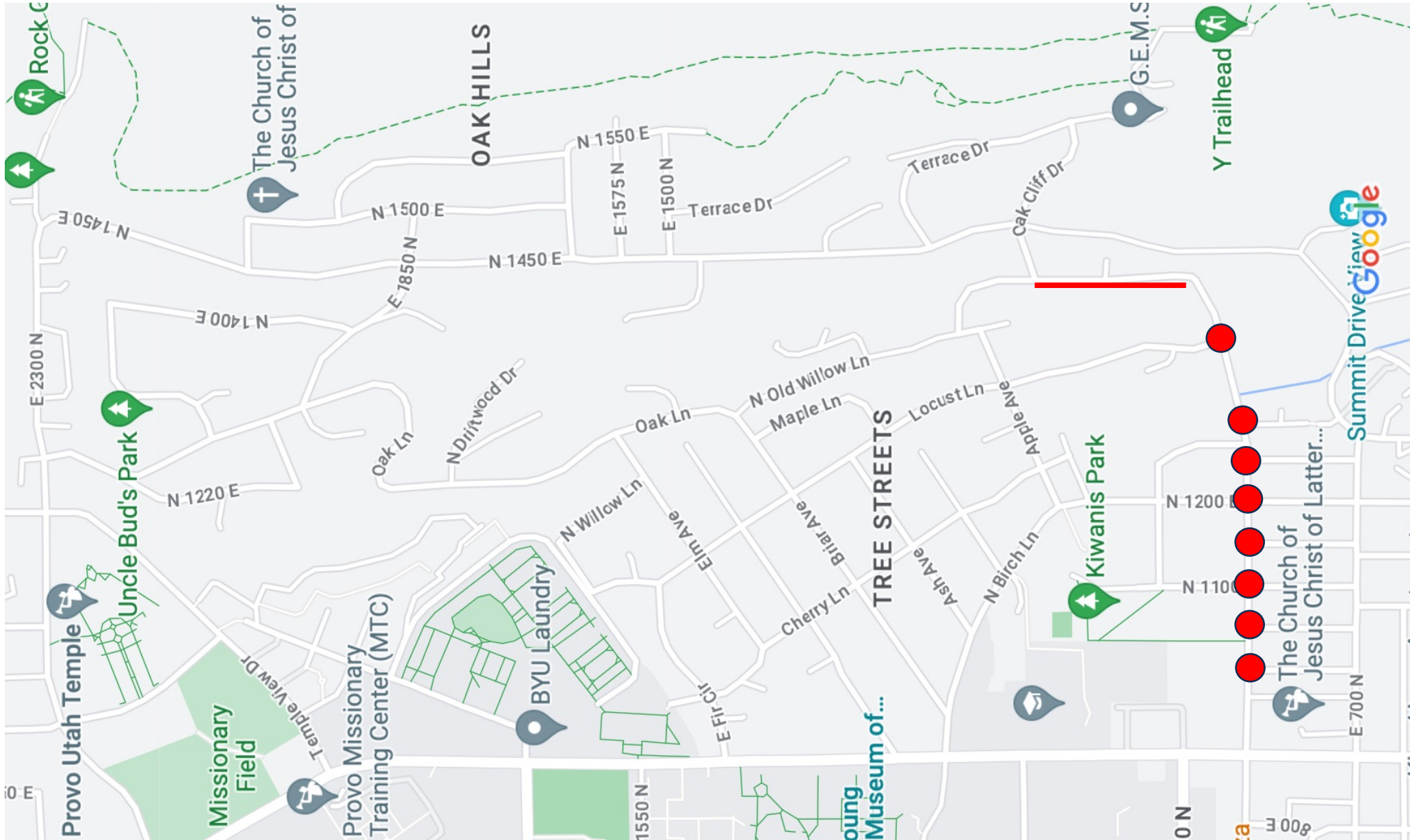


Safe Walks to School Committee Recommendations:

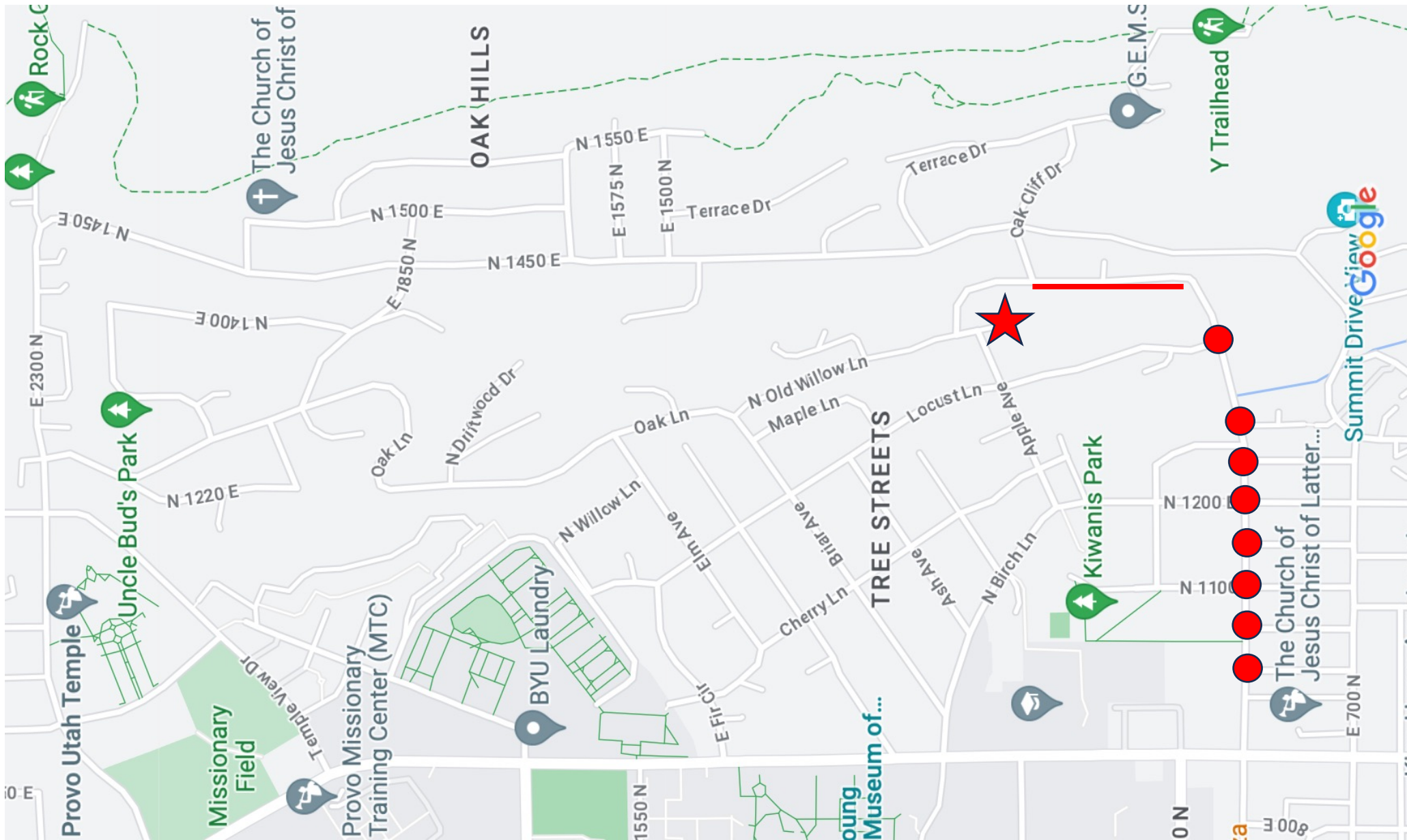
Sidewalk and bike lane separated from traffic by a barrier (curb, grass, trees, concrete divider etc.) from the northeast corner of the school property going south along Oakmont Lane and down to the connection with 820 North.



Traffic calming at several intersections on 820 North with raised crosswalks, bumpouts, traffic circles and/or other high visibility pedestrian crossing areas.



Pedestrian/bicycle access from the south end of Old Willow Lane onto the school campus.



Extension of side walk down the entire length of 1450 East on the west side and down the north side of Oak Cliff Drive.

