

1020 SOUTH TRAFFIC STUDY

By Vern Keeslar, Traffic Manager

July 16, 2024



Area Map



- Functional Classification is a Local street

Crash Data

- January 1, 2021 through December 31, 2023
- 2 crashes reported (1 in 2021, 1 in 2022)
 - Intersection related, angle collision
- Crash severity
 - No injuries
- Crash information
 - Crash occurred on a dry roadway surface condition with clear weather
 - Crashes occurred in daylight conditions

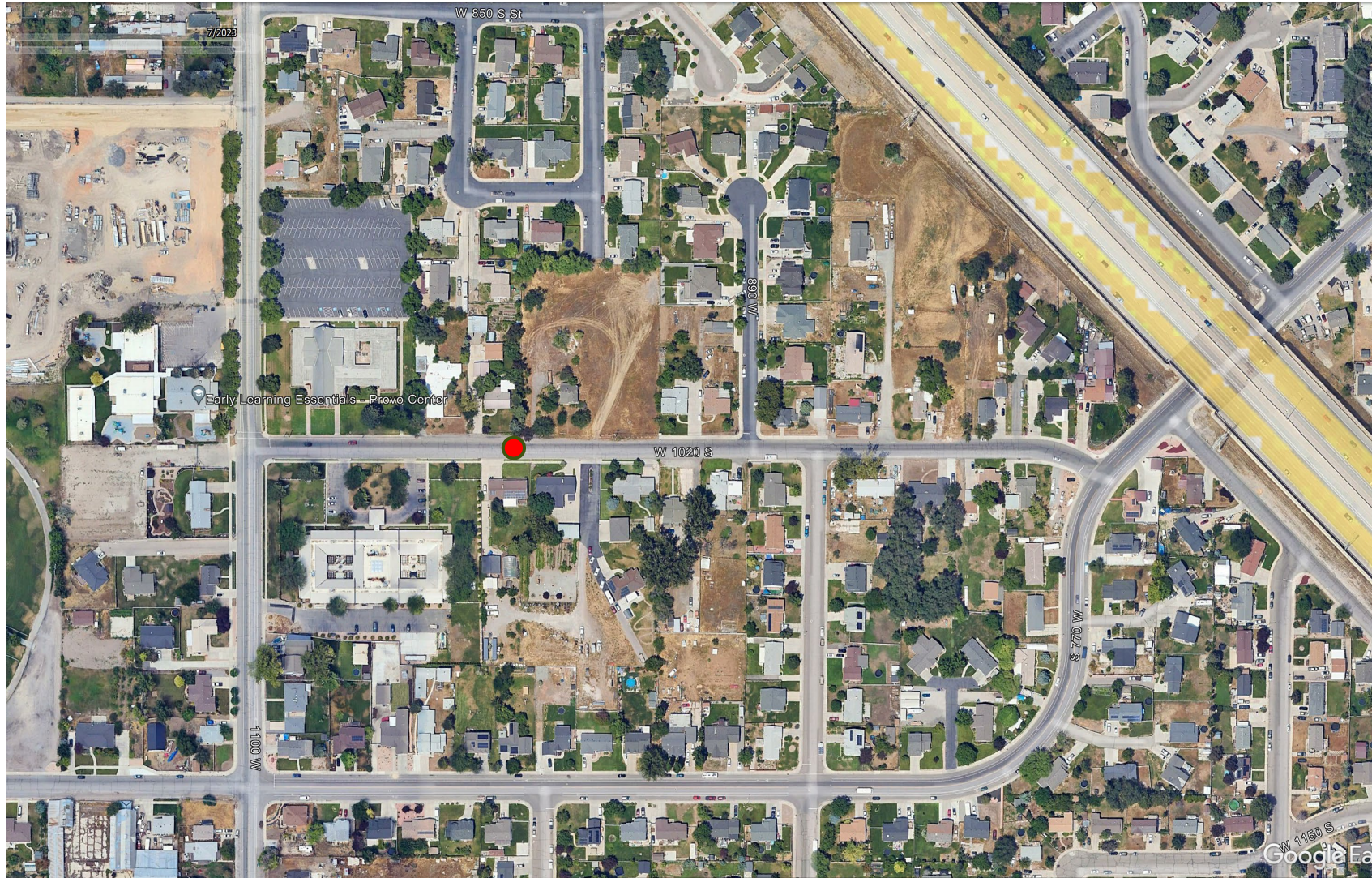
Crash Data Location Map



Definitions

- The average speed is the summation of the spot-measured speeds at a specific location of vehicles divided by the number of vehicles observed
- The 85th percentile speed is the speed at or below which 85 percent of all vehicles are observed to travel under free-flowing conditions past a monitored point
- The volume is the number of vehicles that pass the monitoring point
- The directional distribution is the percentage of total two-way traffic that occurs by direction measured for hourly, daily, or season variation

Speed and Volume Monitoring Location



Speed Results

- Dates included March 6, 7, 8, and 9, 2024 (Wednesday-Saturday)
- 77 hours total
- Posted speed limit is 25 mph
- Eastbound average speed 27 mph, 85% speed 33 mph
- Westbound average speed 26 mph, 85% speed 29 mph
- Overall average speed 26 mph
- Overall 85% speed 30 mph
- Eastbound highest speed recorded was in the 46-50 mph category (8)
- Westbound highest speed recorded was in the 36-40 mph category (1)

Volume Results

- Dates included March 6, 7, 8, and 9, 2024 (Wednesday-Saturday)
- 77 hours total
- Eastbound total vehicles 2,882, which averages 38 vehicles per hour or 912 daily
- Westbound total vehicles 3,317, which averages 44 vehicles per hour or 1,056 daily
- The daily directional distribution is 46% eastbound 54% westbound
- Overall total vehicles were 6,199 which averages 81 vehicles per hour or 1,944 vehicles daily

Summary

- 1 crash reported
- Overall average speed 26 mph
- Overall 85% speed 30 mph
- Overall total vehicles were 6,199 which averages 81 vehicles per hour or 1,944 vehicles daily

Possible Solutions

- Install one 25 mph sign on 1020 South just west of 770 West (eastbound speed limit sign is existing)
- Provide speed information to Provo City Police Department for traffic enforcement

Contact Information

- Vern Keeslar, AICP, Traffic Manager
 - Phone: 801-852-6783
 - Email: vkeeslar@provo.org
 - Address: 1377 South 350 East, Provo, UT 84606

